

MODULE 9 L01

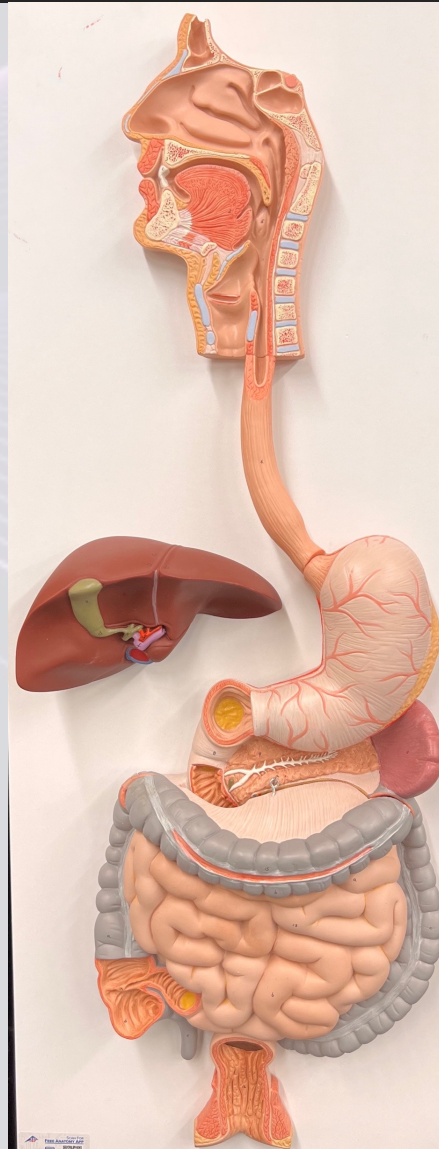
Digestive Tract vs Accessory Organs

Dr. Lisa Brinn
lbrinn@fiu.edu



1) Digestive Tract and Accessory Organs

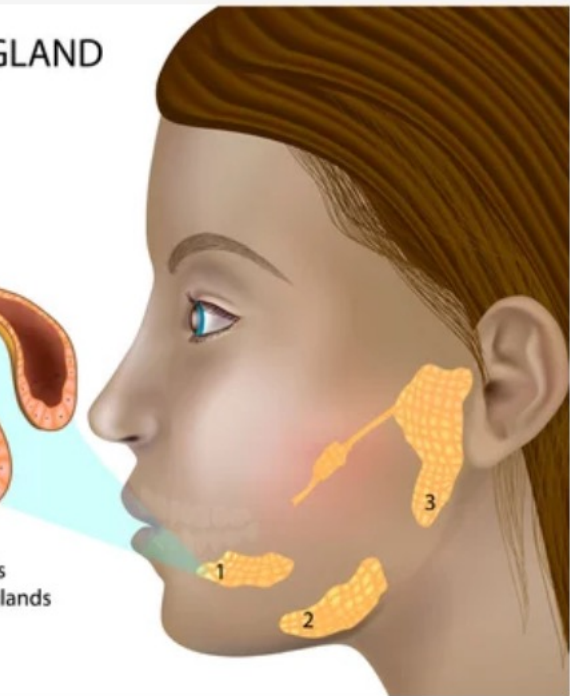
- Digestive tract:
 - ❖ Oral cavity
 - ❖ Pharynx
 - ❖ Esophagus
 - ❖ Stomach
 - ❖ Small intestine
 - ❖ Large intestine
- Accessory organs:
 - ❖ Teeth
 - ❖ Tongue
 - ❖ Salivary glands
 - ❖ Liver
 - ❖ Gallbladder
 - ❖ Pancreas



SALIVARY GLAND



- 1 Sublingual glands
2 Submandibular glands
3 Parotid glands



Functions

- Ingestion
- Mechanical processing
- Digestion
- Secretion
- Absorption
- Excretion
- Compaction
- Defecation

